

Important Steps When Using the A1CNow^{®+} System*

A1CNow^{®+} SYSTEM

1 Match lot numbers



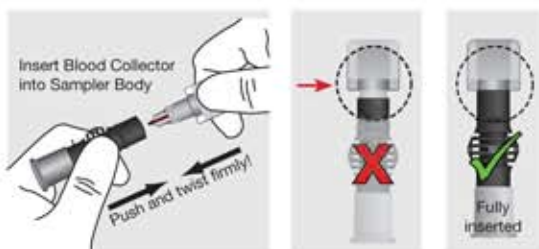
2 Open Sampler Pouch (pouch 1)



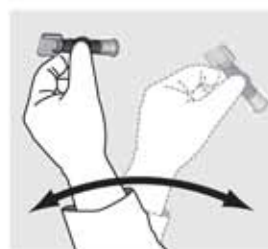
3 Collect the right amount of blood



4 Insert Blood Collector all the way



5 Shake well 6-8 times



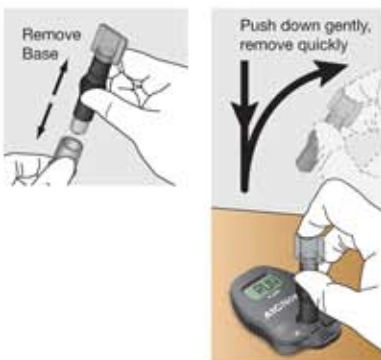
6 Open Test Cartridge Pouch (pouch 2)



7 Match codes and insert cartridge; wait for SMPL to display



8 Remove Base; dispense sample and remove quickly



9 Do not handle monitor until test is complete; results in 5 minutes



+1 (877) 870-5610 (US only)
+1 (317) 870-5610
www.A1CNow.com

*Review A1CNow+ Professional Procedure Guide insert for full testing instructions before using this abbreviated guide.

Peel and stick tape strips go here—this area does NOT print

Peel and stick tape strips go here—this area does NOT print